

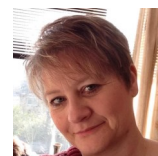
**Date:** Saturday 12 and Sunday 13 March 2022

**Location:** New Place Hotel, Shirrell Heath, Hampshire

**Price:** £400 - Save £25 with this Early Bird Special price if you book before 25 September 2021, £425 after this

## Layer Cake Bonanza with Sarah Soward and Terry Summerfield

We all have a layer cake hidden in our stash, so here is the time to seek it out and make it into something fabulous... Over the weekend you will be working with Sarah and Terry from Pauline's Patchwork and you will have a choice of 3 quilts tops with different skill levels: Beach Huts; Twister - this needs a special ruler which can be purchased on the day (and has a bonus project of a great tote bag); All Around the Block.



### Two days of sewing plus dinner, B&B at a luxurious hotel

Classes will take place in the hotel from 10 – 4 on Saturday and 10 – 4 on Sunday AND you can work until late, late, late on Saturday evening if you want. Lunch and refreshments will be served both days, plus dinner Saturday and breakfast on Sunday. New Place Hotel will be our home for the weekend. Located in the Hampshire countryside and easily accessible from A3, M3, A31, M27, the hotel offers a perfect countryside setting, blending traditional and modern spaces over 32 acres of landscaped gardens. It is an ideal location for sewing retreats with modern teaching settings and accommodation and a restaurant in the Manor House. There is a Fitness Centre and pool and you are welcome to enjoy the use of its facilities during your stay; so you can use the gym or just relax by the pool and enjoy a quiet moment in the jacuzzi, the choice is yours! There is also free parking and free wifi. Indeed, New Place offers everything you need for the perfect weekend retreat.

### Book your place now



- .....
- ☐ I enclose a cheque for £400 if booked before 25 September 2021, £425 after this. Make cheques payable to: justhands-on.tv Ltd.
  - ☐ I paid via the SHOP on [www.justhands-on.tv](http://www.justhands-on.tv). This provides my booking details.
  - ☐ I enclose a cheque for £50 deposit (non-refundable), made payable to justhands-on.tv Ltd. Balance due no later than 25 September 2021

Name: \_\_\_\_\_

Address: \_\_\_\_\_

Telephone: \_\_\_\_\_ Email: \_\_\_\_\_

Special dietary requests/allergies: \_\_\_\_\_

Do you have any mobility issues? Yes ☐ No ☐ If yes please state \_\_\_\_\_

Ground floor rooms will be subject to availability

**Post the booking form and cheques to: justhands-on.tv Ltd, Oakwick, 113 Nashgrove Lane, Finchampstead, Berks, RG40 4HG**

SS/TS 12-13 March 2022 NPH

# Justhands-on.tv RETREAT AGREEMENT

## Booking A Place

- Pay in full via the SHOP on [www.justhands-on.tv](http://www.justhands-on.tv) . Please note that a £50 deposit is part of your full payment
- Alternatively, complete and return the Booking Form with a deposit of £50 to justhands-on.tv Ltd, Oakwick, 113 Nashgrove Lane, Finchampstead Berkshire RG40 4HG.
- You will receive confirmation of your booking via email.
- The £50 deposit is non-refundable.

## Payment

- You can pay by Credit Card or PayPal account via our SHOP on [www.justhands-on.tv](http://www.justhands-on.tv) .
- You can pay by Cheque made payable to: justhands-on.tv Ltd.
- You can pay by BACS. Please contact us by email at [retreat@justhands-on.tv](mailto:retreat@justhands-on.tv) to set this up.
- If you choose to pay in two stages (deposit & balance), the balance of payment must be received 26 weeks before the date of the Retreat. We reserve the right to reallocate your place and retain your deposit if we do not receive full payment by that time.
- If you would like a receipt, please contact us by email at [retreat@justhands-on.tv](mailto:retreat@justhands-on.tv) to confirm your request.

## Cancellations

- Cancellations must be confirmed to justhands-on.tv Ltd in writing to [retreat@justhands-on.tv](mailto:retreat@justhands-on.tv) or a letter posted to: Attn justhands-on.tv Ltd, Oakwick, 113 Nashgrove Lane, Finchampstead, Berkshire RG40 4HG. Upon receipt of your written cancellation, the notice period becomes effective.
- Cancellation fees apply. There is a sliding scale of cancellation fees, based on when justhands-on.tv receives your cancellation. Cancellation fees will be charged in line with the cancellation fees of the host venue.
- Should we have to cancel a justhands-on.tv Retreat for any reason you will receive a full refund.

## Special Notes

- We reserve the right to make changes to the retreat programme, e.g. due to the ill health of the Tutor. You will be advised of any necessary changes as soon as is possible.
- The Terms & Conditions of the host venue apply from the moment of venue check-in until the moment of departure.

**Full Terms and Conditions can be found at [www.justhands-on.tv/terms-and-conditions](http://www.justhands-on.tv/terms-and-conditions)**

**If you have any questions contact us on:**

**[retreat@justhands-on.tv](mailto:retreat@justhands-on.tv)**