



Q-1900



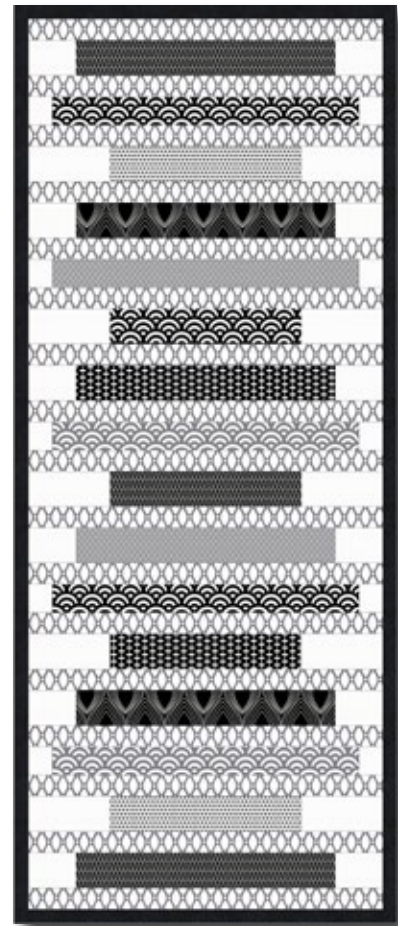
Beginner

Duo & Duo Mini Table runner

21¼ X 51¼" (53 x 130 cm)

FABRIC REQUIREMENT:

Fabrics from series „Duo”, „Duo Mini”, „Quilters Solid” and „Quilters Shadow”, all 44" (112 cm) wide.



OTHER SUPPLIES:

Batting: Thin, 95" (240 cm) wide 24" (60 cm)

In addition: Matching sewing and quilting thread.

The Basics: Whenever this symbol ➡ appears in the directions, you will find a detailed explanation for "Sewing Basics" in the website www.stofffabrics.com under the Gallery.

CUTTING ➡:

¼" (0,75 cm) seam allowance is included.

| | | |
|-----------|----------|--|
| Fabric A: | 9 Strips | 1¾" x 44" (4,5 x 112 cm). Recut 17 strips 1¾" x 21¼" (4,5 x 54 cm) |
| Fabric B: | 2 Strips | 2½ x 14¾" (6,5 x 37,5 cm) |
| Fabric C: | 2 Strips | 2¼ x 17½" (5,5 x 44,5 cm) |
| Fabric C: | 1 Strip | 2½ x 10¾" (6,5 x 27,5 cm) |
| Fabric D: | 2 Strips | 2¼ x 17½" (5,5 x 44,5 cm) |
| Fabric E: | 2 Strips | 2½ x 10¾" (6,5 x 27,5 cm) |
| Fabric F: | 1 Strip | 2½ x 14¾" (6,5 x 37,5 cm) |
| Fabric F: | 1 Strip | 2½ x 10¾" (6,5 x 27,5 cm) |
| Fabric G: | 1 Strip | 2½ x 14¾" (6,5 x 37,5 cm) |
| Fabric G: | 1 Strip | 2¼ x 17½" (5,5 x 44,5 cm) |
| Fabric H: | 2 Strips | 2½ x 14¾" (6,5 x 37,5 cm) |
| Fabric H: | 1 Strip | 2½ x 10¾" (6,5 x 27,5 cm) |



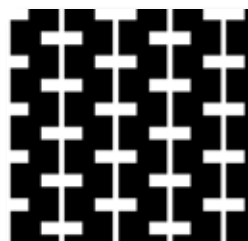
A: 4500-201
18" (45 cm)

B: 4500-189
4" (10 cm)

C: 4500-208
6" (15 cm)

D: 4500-211
4" (10 cm)

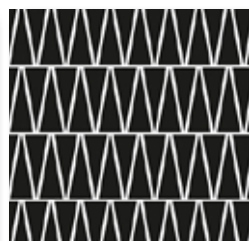
E: 4500-222
4" (10 cm)



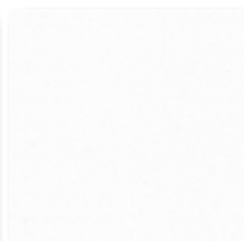
F: 4500-226
4" (10 cm)



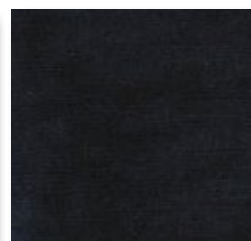
G: 4500-232
4" (10 cm)



H: 4500-234
8" (20 cm)



J: 4510-101
12" (30 cm)



K: 4516-903
22" (55 cm)

Fabric J: 3 Strips 2½ x 44" (6,5 x 112 cm). Recut 12 strips 2½ x 4" (6,5 x 10 cm).
And 10 strips 2½ x 6" (6,5 x 15 cm).

Fabric J: 1 Strip 2¼ x 44" (5,5 x 112 cm). Recut 10 strips 2¼ x 2½" (5,5 x 6,5 cm)

Fabric K: 4 Strips 4¾ x 44" (12 x 112 cm) Binding

SEWING OF QUILT TOP: Seam allowance is 1/4" (0,75 cm).

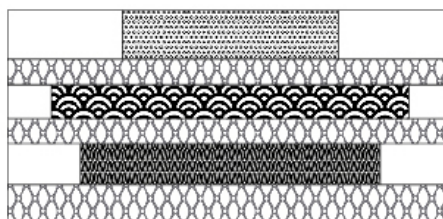
First join all strips in fabric B-H with the small strips in fabric J, see layout on page 4. Now place all strips in one row as layout page 4.

Join block 1, see sketch beside.

The nummers of the fabrics, see layout page 4.

Iron the seams to one side - upwards.

Also join block 2-6 as layout on page 4.



Now the quilt technique "Quilt as you go" is used.

Take a piece of fabric 24 x 53½" (60 x 136 cm) for the back side and place the batting on the wrong side of the back side, see sketch.



Position the first block with right side out $\frac{1}{2}$ " (1 cm) from bottom edge of backside (1).

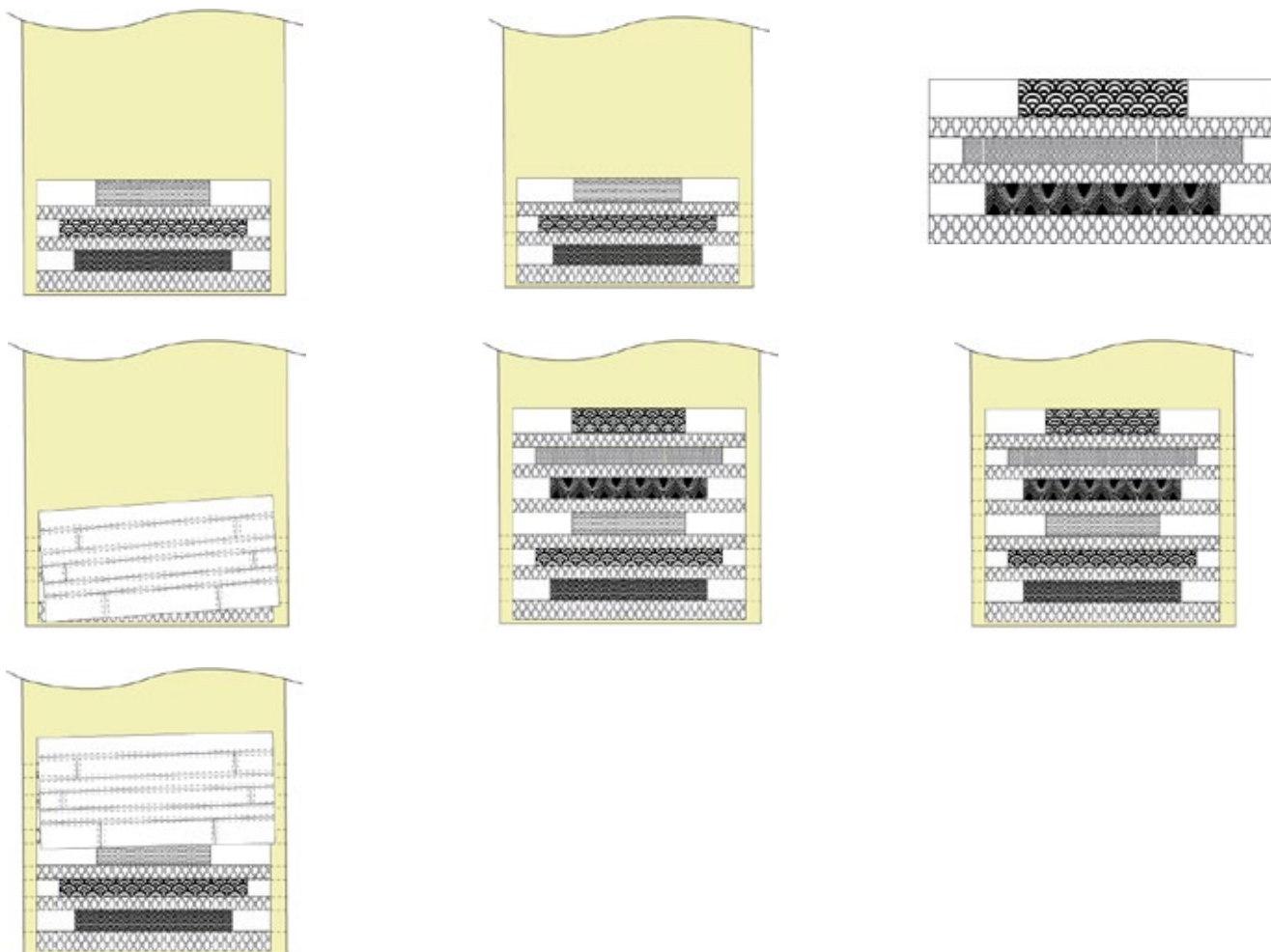
Quilt all seams beside each strips (2).

Take second block (3) and with right side together join the block to first block along the top edge

(4). Fold back the second block (5). Quilt all seams beside each strip (6).

Continue as above until all 7 blocks are joined to back side (7).

TIPS: if it's difficult to make the edges straight it's a good idea to sew on the block from center of block to left side and then again from center to right side.



Trim all edges.

QUILTING AND BINDING:

Due to the technique "Quilt as you go" the table runner is already put together with backing and quilted too.

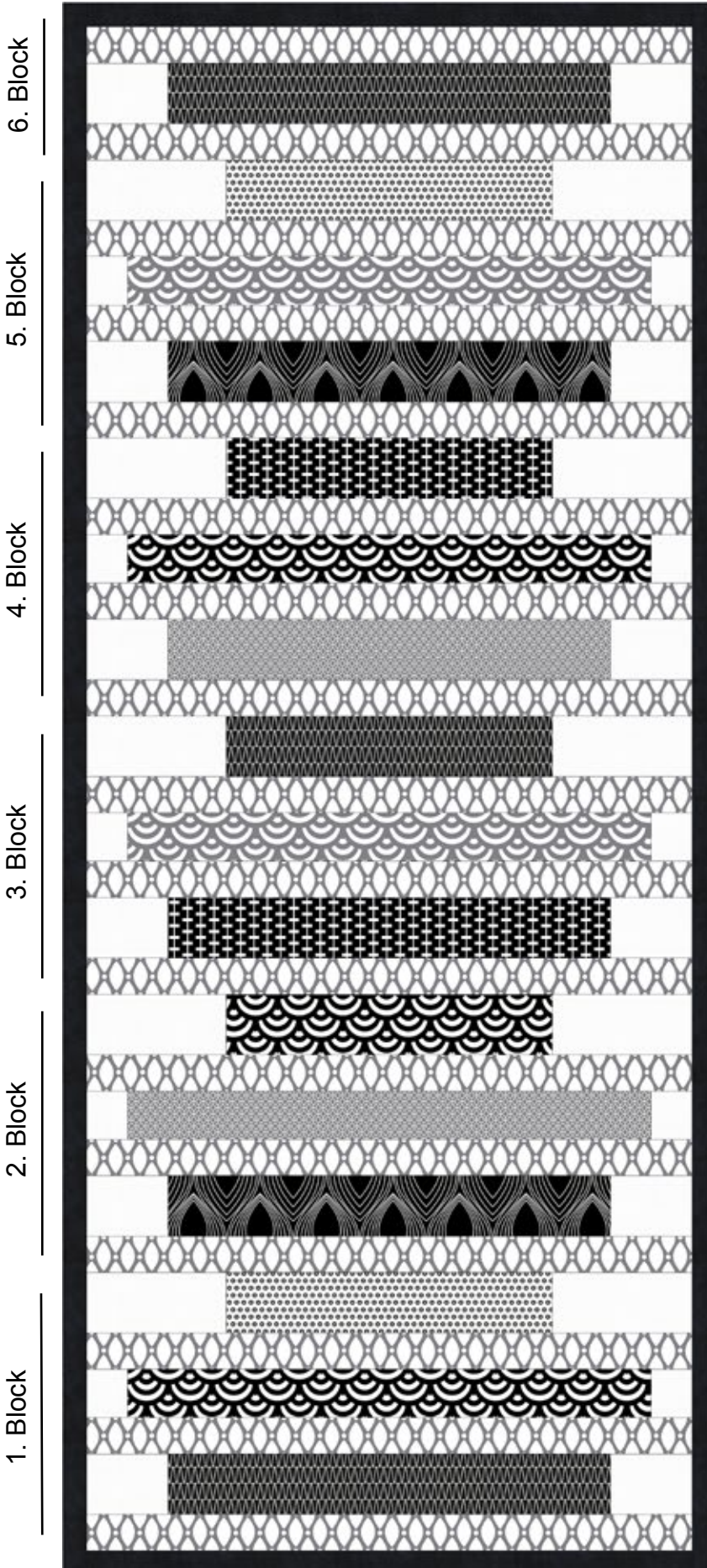
Sew top binding $\frac{3}{4}$ " (2 cm wide) in fabric K ➡.

We wish you much success and pleasure with our fabrics and pattern.
Your Team from STOF fabrics.

Binding

$\frac{3}{4}$ " (2 cm) wide

J = white fabric



A: $1\frac{3}{4}$ x $21\frac{1}{4}$ " (4,5 x 54)

H: $2\frac{1}{2}$ x $14\frac{3}{4}$ " (6,5 x 37,5) +
J: $2\frac{1}{2}$ x 4" (6,5 x 10)

A: $1\frac{3}{4}$ x $21\frac{1}{4}$ " (4,5 x 54)

E: $2\frac{1}{2}$ x $10\frac{3}{4}$ " (6,5 x 27,5) +
J: $2\frac{1}{2}$ x 6" (6,5 x 15)

A: $1\frac{3}{4}$ x $21\frac{1}{4}$ " (4,5 x 54)

D: $2\frac{1}{4}$ x $17\frac{1}{2}$ " (5,5 x 44,5) +
J: $2\frac{1}{4}$ x $2\frac{1}{2}$ " (5,5 x 6,5)

A: $1\frac{3}{4}$ x $21\frac{1}{4}$ " (4,5 x 54)

B: $2\frac{1}{2}$ x $14\frac{3}{4}$ " (6,5 x 37,5) +
J: $2\frac{1}{2}$ x 4" (6,5 x 10)

A: $1\frac{3}{4}$ x $21\frac{1}{4}$ " (4,5 x 54)

F: $2\frac{1}{2}$ x $10\frac{3}{4}$ " (6,5 x 27,5) +
J: $2\frac{1}{2}$ x 6" (6,5 x 15)

A: $1\frac{3}{4}$ x $21\frac{1}{4}$ " (4,5 x 54)

C: $2\frac{1}{4}$ x $17\frac{1}{2}$ " (5,5 x 44,5) +
J: $2\frac{1}{4}$ x $2\frac{1}{2}$ " (5,5 x 6,5)

A: $1\frac{3}{4}$ x $21\frac{1}{4}$ " (4,5 x 54)

G: $2\frac{1}{2}$ x $14\frac{3}{4}$ " (6,5 x 37,5) +
J: $2\frac{1}{2}$ x 4" (6,5 x 10)

A: $1\frac{3}{4}$ x $21\frac{1}{4}$ " (4,5 x 54)

H: $2\frac{1}{2}$ x $10\frac{3}{4}$ " (6,5 x 27,5) +
J: $2\frac{1}{2}$ x 6" (6,5 x 15)

A: $1\frac{3}{4}$ x $21\frac{1}{4}$ " (4,5 x 54)

D: $2\frac{1}{4}$ x $17\frac{1}{2}$ " (5,5 x 44,5) +
J: $2\frac{1}{4}$ x $2\frac{1}{2}$ " (5,5 x 6,5)

A: $1\frac{3}{4}$ x $21\frac{1}{4}$ " (4,5 x 54)

F: $2\frac{1}{2}$ x $14\frac{3}{4}$ " (6,5 x 37,5) +
J: $2\frac{1}{2}$ x 4" (6,5 x 10)

A: $1\frac{3}{4}$ x $21\frac{1}{4}$ " (4,5 x 54)

C: $2\frac{1}{2}$ x $10\frac{3}{4}$ " (6,5 x 27,5) +
J: $2\frac{1}{2}$ x 6" (6,5 x 15)

A: $1\frac{3}{4}$ x $21\frac{1}{4}$ " (4,5 x 54)

G: $2\frac{1}{4}$ x $17\frac{1}{2}$ " (5,5 x 44,5) +
J: $2\frac{1}{4}$ x $2\frac{1}{2}$ " (5,5 x 6,5)

A: $1\frac{3}{4}$ x $21\frac{1}{4}$ " (4,5 x 54)

B: $2\frac{1}{2}$ x $14\frac{3}{4}$ " (6,5 x 37,5) +
J: $2\frac{1}{2}$ x 4" (6,5 x 10)

A: $1\frac{3}{4}$ x $21\frac{1}{4}$ " (4,5 x 54)

E: $2\frac{1}{2}$ x $10\frac{3}{4}$ " (6,5 x 27,5) +
J: $2\frac{1}{2}$ x 6" (6,5 x 15)

A: $1\frac{3}{4}$ x $21\frac{1}{4}$ " (4,5 x 54)

C: $2\frac{1}{4}$ x $17\frac{1}{2}$ " (5,5 x 44,5) +
J: $2\frac{1}{4}$ x $2\frac{1}{2}$ " (5,5 x 6,5)

A: $1\frac{3}{4}$ x $21\frac{1}{4}$ " (4,5 x 54)

H: $2\frac{1}{2}$ x $14\frac{3}{4}$ " (6,5 x 37,5) +
J: $2\frac{1}{2}$ x 4" (6,5 x 10)

A: $1\frac{3}{4}$ x $21\frac{1}{4}$ " (4,5 x 54)

6. Block

5. Block

4. Block

3. Block

2. Block

1. Block