



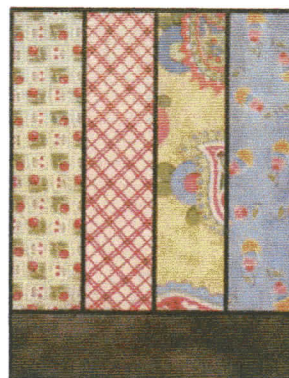
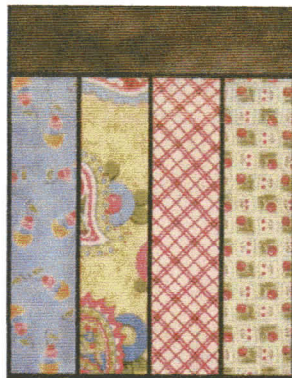
Jelly Roll quilt by Sarah Soward

Requirements

- 1 Jelly Roll (contains 40 strips of fabric measuring 2 1/2" x 44")
- 1 Metre of toning fabric

Instructions

1. Join 7 sets of 4 strips
2. Cut into 4 sections of 8 1/2"
3. Cut 7 x 2 1/2" strips from the background fabric
4. Join blocks to background in a washing line. You should get 5 on a strip. Now cut your background strip to the same size as your block (see below)



5. Now iron.
6. Join Blocks together one up, one down etc. You need 5 in a row repeated 6 times.
7. Join the 6 rows together and add desired border.