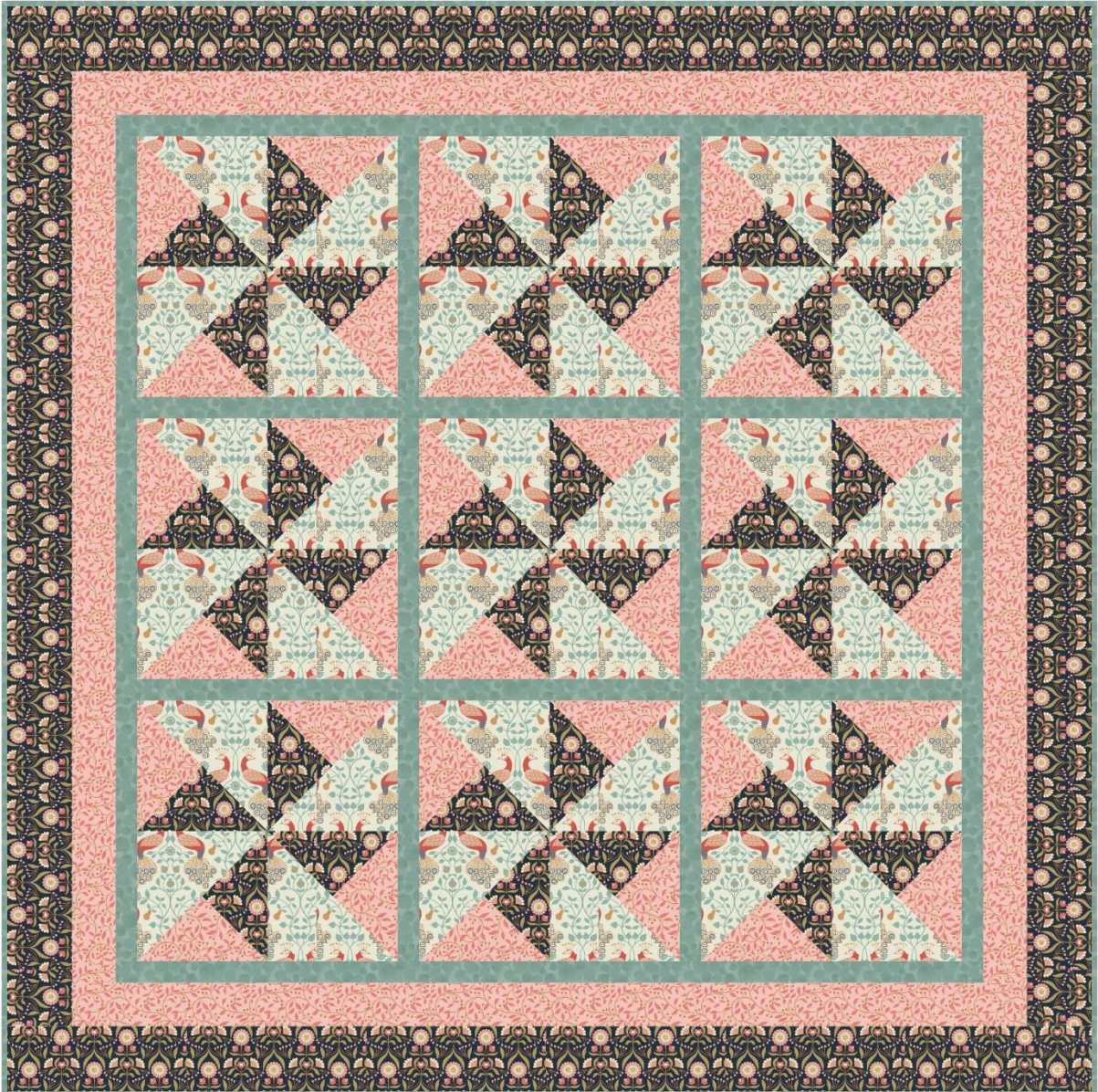


# Chieveley

## Lewis & Irene

Designed and made by Sally Ablett

Size 50" x 50" block size 12½" x 12½"



Main diagram

## Requirements

Fabrics from the Chieveley collection:

1. A242.3 - Drawing room blooms on darkest blue -  $1\frac{1}{4}$ yd -  $1\frac{1}{4}$ mtr
2. A243.2 - Garland swirl on pink - 1yd - 1mtr
3. A245.1 - Peacock & pear on cream -  $\frac{7}{8}$ yd - 80cm
4. BB121 - Sage green -  $\frac{5}{8}$ yd - 60cm

Wadding and backing 54" x 54"

Use  $\frac{1}{4}$ " seam allowance throughout. Press all seams open unless otherwise noted.

### From fabric 1 cut

2 x  $3\frac{1}{2}$ " x  $50\frac{1}{2}$ "

2 x  $3\frac{1}{2}$ " x  $44\frac{1}{2}$ "

9 x  $7\frac{1}{4}$ " x  $7\frac{1}{4}$ " cut in half diagonally twice

### From fabric 2 cut

2 x  $2\frac{1}{2}$ " x  $44\frac{1}{2}$ "

2 x  $2\frac{1}{2}$ " x  $40\frac{1}{2}$ "

9 x  $7\frac{1}{4}$ " x  $7\frac{1}{4}$ " cut in half diagonally twice

### From fabric 3 cut

18 x  $6\frac{7}{8}$ " x  $6\frac{7}{8}$ " cut in half diagonally once

### From fabric 4 cut

2 x  $1\frac{1}{2}$ " x  $40\frac{1}{2}$ "

4 x  $1\frac{1}{2}$ " x  $38\frac{1}{2}$ "

6 x  $1\frac{1}{2}$ " x  $12\frac{1}{2}$ "

## Making up the block

Lay out the fabric pieces for the block as in the diagram.

Sew the small triangles together to make a larger triangle.

Next stitch the two triangles together to make a square.



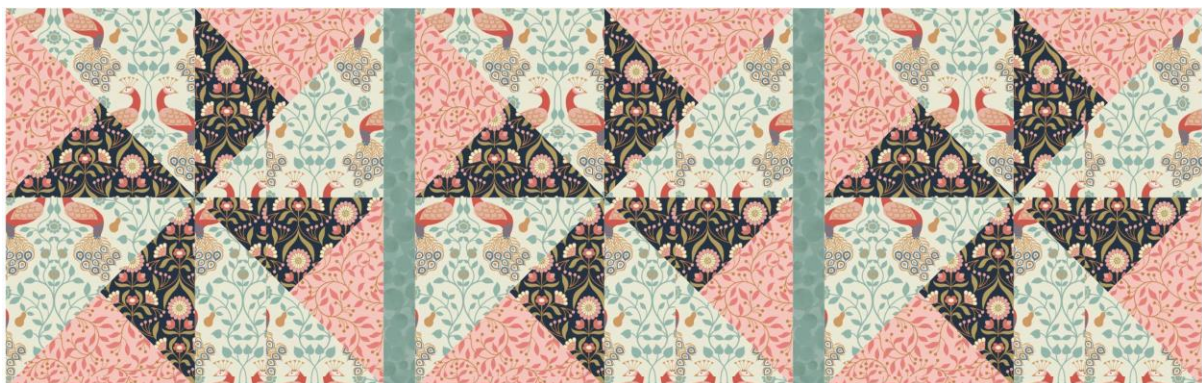
Sew the squares together in rows and then sew the rows together to make a square.

Sew 9 in total.



Lay out the blocks as in the main diagram.

Sew the sashing in between the blocks.



Do this to all 3 rows, next sew the sashing in between the rows.

Sew the sashing to the sides and then top and bottom.

Stitch the inner border of fabric 2 to the sides, then the top and bottom.

Take your last strips and sew to the sides, then the top and bottom.

### **COMPLETION**

1. Sandwich quilt top, wadding and backing. Pin or baste layers.
2. Quilt as desired.
3. Double bind edges with 2¼" from fabric 4.